

MONTHLY MEMBERSHIP PROGRESS REPORT

District N 2

Results as of: 4/30/2026

GMT:

LOCATION NOVA SCOTIA

GMT CA

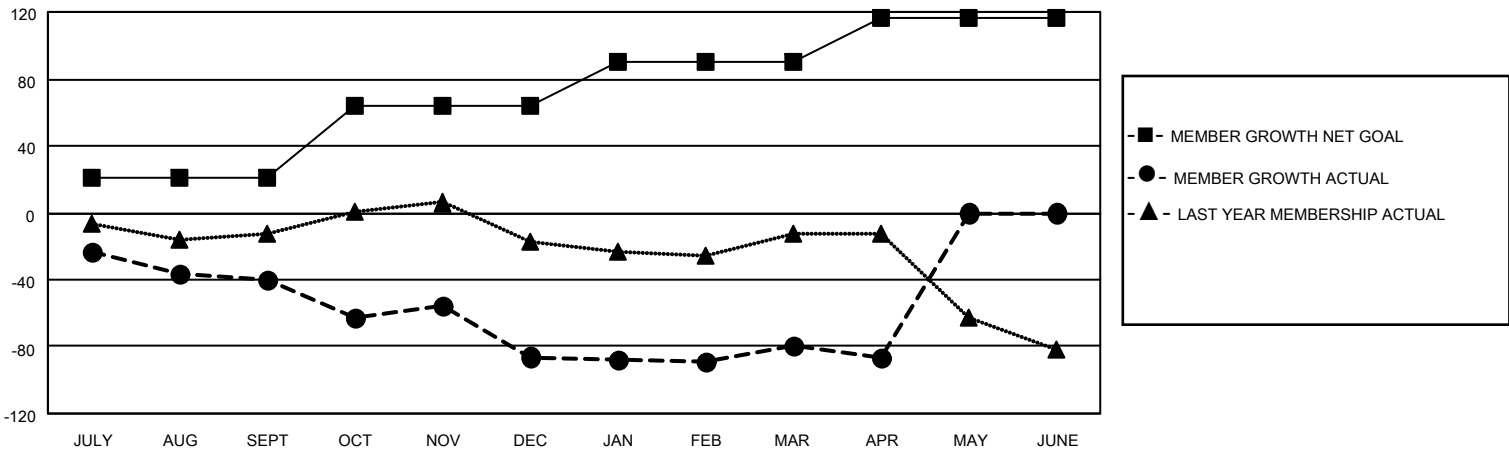
Clubs			
RESULTS FOR 2025-2026			
QUARTER	NEW CLUB GOAL	NEW CLUBS	DROPPED CLUBS
JULY/AUG/SEPT	0	0	0
OCT/NOV/DEC	0	0	2
JAN/FEB/MAR	1	0	1
APR/MAY/JUNE	0	0	0

Members			
RESULTS FOR 2025-2026			
QUARTER	MEMBER GROWTH NET GOAL	MEMBER GROWTH ACTUAL	DROPPED MEMBERS ACTUAL (including transfers)
JULY/AUG/SEPT	21	35	60
OCT/NOV/DEC	43	65	96
JAN/FEB/MAR	26	60	46
APR/MAY/JUNE	26	9	16

GOALS AND ACTUAL NEW CLUBS CUMULATIVE



GOALS AND ACTUAL MEMBERS CUMULATIVE



DROPPED CLUBS: 3	39 CLUBS OF 65 ADDED 1 OR MORE NEW MEMBERS	<u>GENDER DISTRIBUTION</u>	
		MALE	833 (56.40%)
		FEMALE	645 (43.67%)
<u>DROPPED MEMBERS</u>		TOTAL FAMILY UNIT MEMBERS 261	
DECEASED	32	FAMILY MEMBERS PAYING HALF DUES 132	
CLUB CANCELLED	11		
OTHER	175		
TOTAL	218		

[CLICK HERE FOR CUMULATIVE MEMBERSHIP DATA](#)